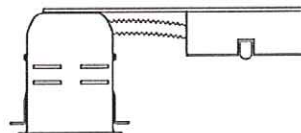
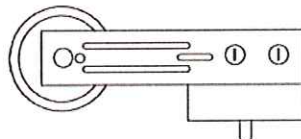


DESCRIPTION

REMODEL NON-IC HOUSING
LINE VOLTAGE FOR AREAS WITHOUT INSULATION.
INTERNAL THERMAL PROTECTION.


CUT OUT

3.622" (92MM)



LIGHT SOURCE

 GU10 / GZ10 - 50W MAX. 120V

 LED GU10 - 120V - 2W MAX.
EQUIVALENT LIGHTING EFFECT OF
A 35W GU10
38° AND 60° BEAM AVAILABLE.

TECHNICAL INFO

CAN HEIGHT: 4.44" (113 MM)
FRAME WIDTH: 2.95" (75 MM)
FRAME LENGTH: 11.02" (280 MM)
120V

