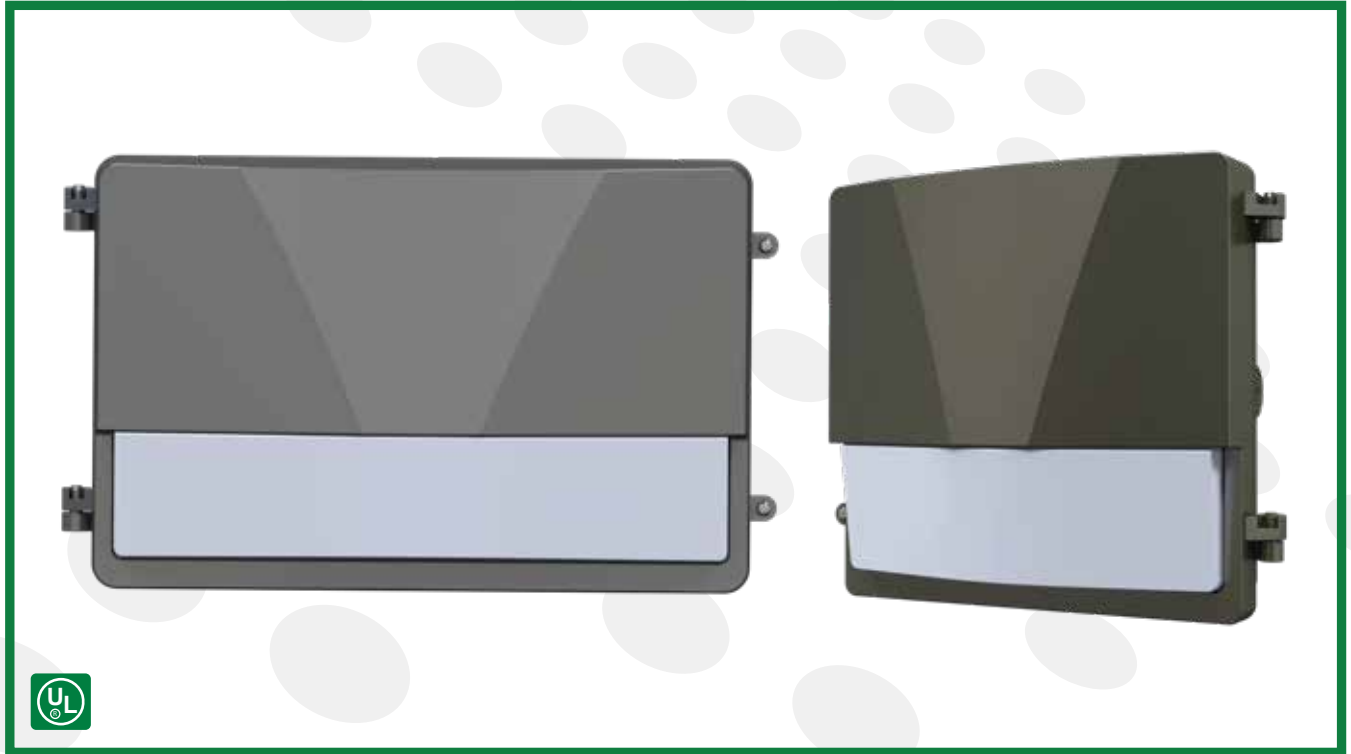




ZION™

3rd Gen
Wall Pack



SKU	DLC Model #
157087	ZPS-MB421-70W-V1-T1-E11-P3
157095	ZPS-MB421-120W-V1-T1-E11-P3

Beyond LED Technology's ZION 3rd Gen (SEMI CUT-OFF) LED Wall Pack is an innovative, high-performance lighting solution designed for a wide range of outdoor applications. Featuring a sleek, modern design, the ZION 3rd Gen Semi Cut-off Wall Pack offers adjustable wattage and CCT selections, providing flexible lighting options to meet various requirements. It delivers exceptional performance while maximizing energy savings. The ZION 3rd Gen Semi Cut-off Wall Pack is engineered for durability, with a die-cast aluminum housing & polycarbonate lens that ensures long-lasting protection. A built-in photocell allows for automatic dusk-to-dawn operation, further enhancing energy efficiency. IP65-rated, this fixture is dustproof and water-resistant, making it perfect for outdoor environments such as parking lots, walkways, building exteriors, and more.

Product Features

- Up to 135 lm/W
- Adjustable wattages
- Adjustable CCT
- Built-in photocell
- Die-cast aluminum
- Bronze Housing
- Input Voltage 100-277V AC
- IP65 rated
- UL & DLC Listed

ZION™

3rd Gen Wall Pack



SKU	ADJ. WATT	MAX LUMENS	ADJ. CCT	INPUT VOLTAGE	CRI	LIGHT SPREAD	CONSTRUCTION	DIMMING	IP RATING	CERTIFICATIONS
157087	35W/50W/70W	9450	5000K	100-277V	>80	100°	Aluminum+PC	0-10V	IP65	UL & DLC
157095	80W/100W/120W	13200	3K/4K/5K	120-277V	>80	100°	Aluminum+PC	0-10V	IP65	UL & DLC

SKU: 157087 Specifications

Parameter	Description	Value
General Performance	Model #	ZPS-MB421-70W-V1-T1-E11-P3
	Watt	35W/50W/70W
	Max Lumens	9450
	Lumen Efficacy	Up to 135LM/W
	Color Temperature	5000K
	CRI (Ra)	>80
	Light Spread	100°
	Diffuser Type	PC Lens
Electrical	Input Voltage	100-277Vac
	Frequency	50/60Hz
	Dimming	0-10V
	Power Factor	≥0.9
	Flicker Percent	≤50%
	Driver Brand	GUYUAN
	Driver Model	GY-70W-115V-0690-UNV-10-H-ADJ1
Driver Surge Protection	2KV(L-N);4KV(L/N-G)	
Physical	Operating Temperature	-40°C +40°C
	Operating Humidity	10% - 80%RH
	Storage Temperature	- 30°C + 70°C
	Storage Humidity	10% - 90%RH
	LED Brand	Bridgelux
	LED Type	2835
	LED QTY	340
Construction	Die-Cast Aluminum	
Qualification	Housing Color	Bronze
	IP Rating	IP65

SEMI CUTOFF WALL PACK



ZION™

3rd Gen
Wall Pack

SKU: 157095 / With Photocell

Specifications

Parameter	Description	Value
General Performance	Model #	ZPS-MB421-120W-V1-T1-E11-P3
	Adjustable Watt	80W/100W/120W
	Max Lumens	13200
	Lumen Efficacy	Up to 110LM/W
	Color Temperature	3000K/4000K/5000K
	CRI (Ra)	>80
	Light Spread	100°
	Diffuser Type	PC Lens
Electrical	Input Voltage	120-277Vac
	Frequency	50/60Hz
	Dimming	0-10V
	Power Factor	≥0.9
	Flicker Percent	≤50%
	Driver Brand	BECKY
	Driver Model	BQE108-1050-103-PVF-PS
Driver Surge Protection	2KV(L-N);4KV(L/N-G)	
Physical	Operating Temperature	-40°C +40°C
	Operating Humidity	10% - 80%RH
	Storage Temperature	- 30 + 70 °C
	Storage Humidity	10% - 90%RH
	LED Brand	Bridgelux
	LED Type	2835
	LED QTY	408
Construction	Die-Cast Aluminum	
Qualification	Housing Color	Bronze
	IP Rating	IP65

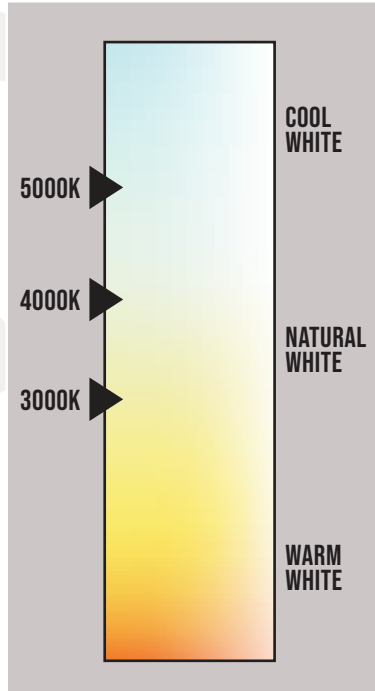
SEMI CUTOFF WALL PACK

ZION™

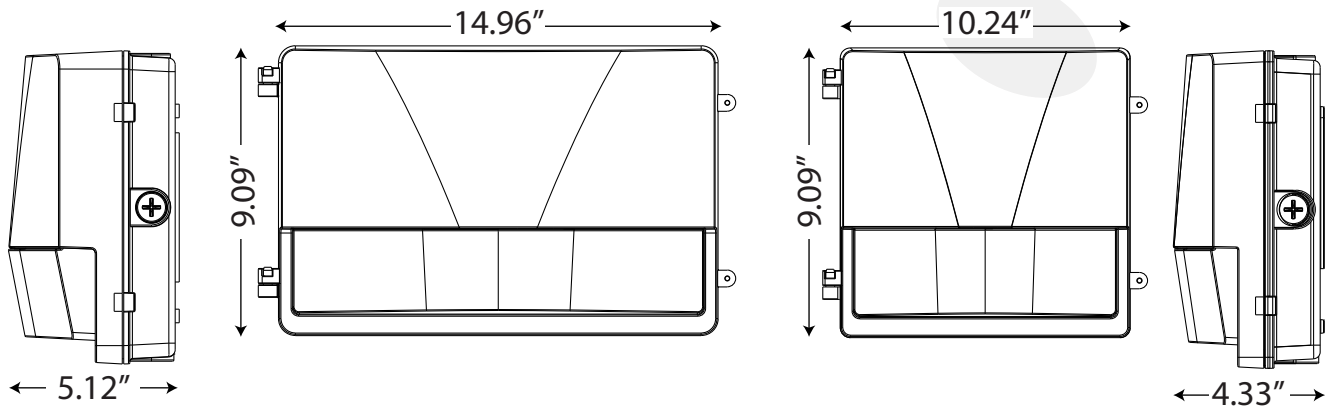
3rd Gen
Wall Pack



Correlated Color Temperature (CCT)



Dimensions



SEMI CUTOFF WALL PACK

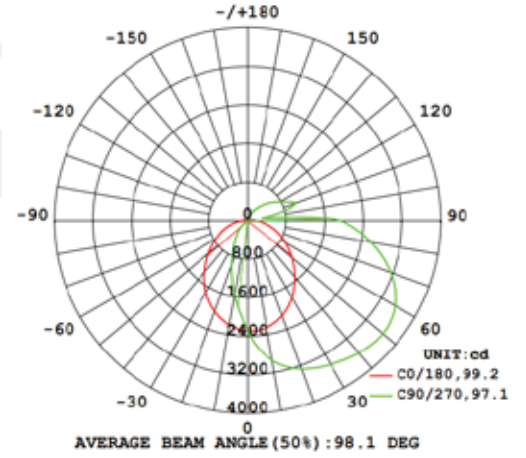
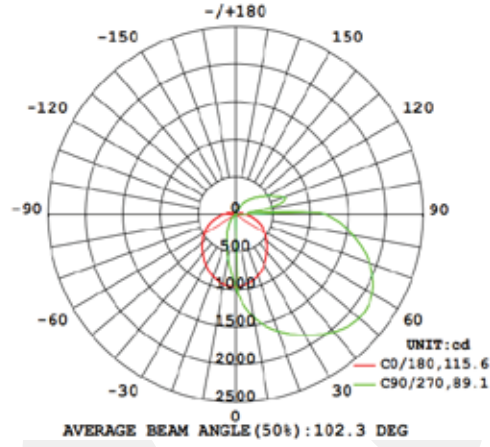


ZION™

3rd Gen
Wall Pack

Light Distribution Curve/Spot

70W: 100°
± 10
120W: 100°± 10



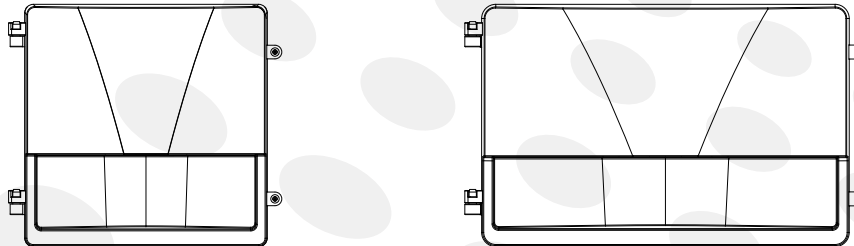
ZION™

3rd Gen Wall Pack



Installation

SAVE THESE INSTRUCTIONS READ THOROUGHLY BEFORE INSTALLATION



WARNING! Fixtures must be grounded and installed in accordance with the National Electrical Code and all local codes. Failure to do so may increase the **RISK OF PERSONAL INJURY, PROPERTY DAMAGE, FIRE AND DEATH**. Install and use so fixture failures do not cause a hazard and use only in environments for which the product is specifically marked.

WARNING! This product can expose you to chemicals including lead and lead compounds, which are known to the State of California to cause cancer and birth defects or other reproductive harm. For more information, go to: www.P65Warnings.ca.gov

WARNING! Dangerous voltage exist within the unit and all precautions usually observed in handling high voltage equipment should be observed when replacing light engine or otherwise servicing luminaires. Disregarding this warning could result in electrical shock and possible injury to the individual installing or servicing this equipment. Installation and servicing should be done by qualified personnel.

CAUTION! Follow ALL luminaire recommendations, product markings, instructions, restrictions and warnings regarding luminaire operation and burning position. Luminaire label shows electrical and environmental requirements and restrictions.

NOTE! This luminaire is designed for outdoor lighting applications with ambient temperatures not exceeding 40°C (104°F).

All electrical work must be done by a qualified electrician.

Turn off electric power to all affected circuits and allow to cool before installation or servicing.

A regularly scheduled maintenance program should be established to retain optimum light output and reduce heat retention. Dusting with a soft, clean, dry cloth is normally sufficient for the optical system. Any accumulation of dust or dirt should be removed regularly.

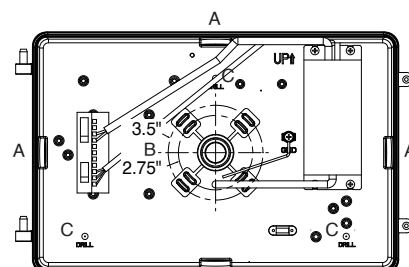
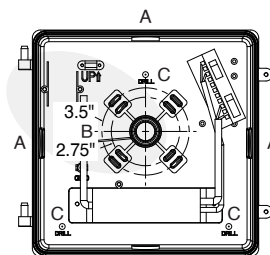
Carefully read these instructions before installing product.

Give instructions to facility owner/manager for future reference.

Mounting The Fixture

Tools Required: Phillips screwdriver

- Turn off power to electrical connections.
- Wiring must be performed by a qualified electrician.
- Make electrical connections according to the local and National Electrical Codes.
- This product is suitable for 120V to 277V wiring.
- Remove fixture from packaging along with hardware bag that contains a junction box gasket and wire nuts.
- Remove 1/2" plug in center (B) for wiring. The fixture supports standard 3 1/4" and 4" junction box.
- Mounting of fixture can be achieved by one of the methods below (see figure 1):
 - Drill the junction box cast detail and use 10-24 screws (provided by others) driven into the 3.5" or 2.75" holes.
 - Or drill the C-Location holes and use fasteners (provided by others).
- Install the fixture on the wall making sure to use the provided junction box gasket to protect from water. Fixture should be oriented as shown in pictures at the top of this instruction page.
- Finish wiring the fixture. There are 5 wires provided. Black wire (line voltage). White wire Neutral. Green or bare copper wire (ground). Grey/Pink wire is DIM (-) (0-10VDC dimming) if dimming is not desired cap this wire. Purple wire is DIM (+) (0-10VDC dimming) if dimming is not desired cap this wire.





ZION™

3rd Gen
Wall Pack

Installation

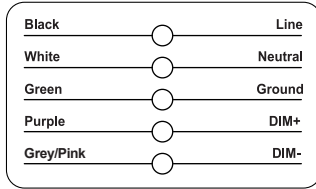
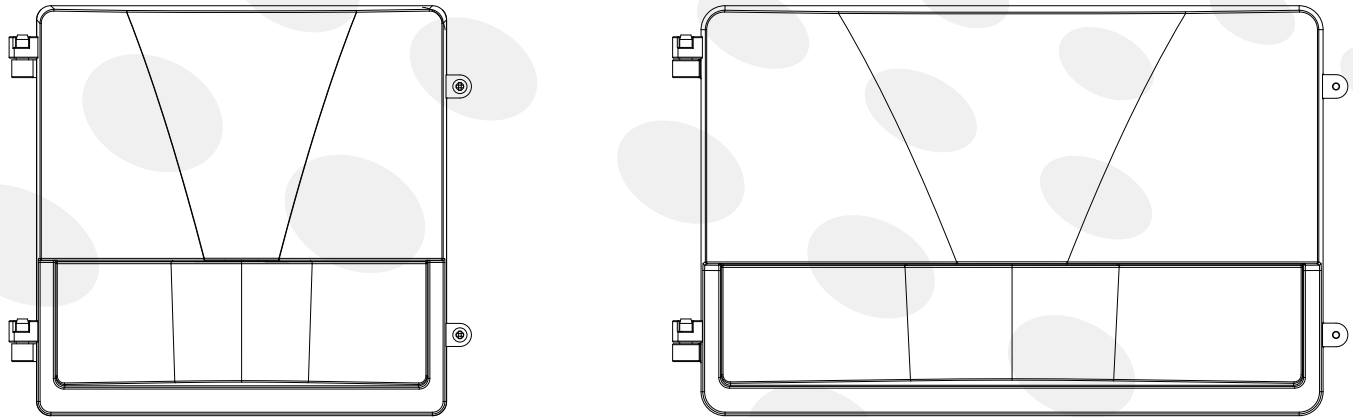


FIGURE 1

A - 1/2" NPS tapped holes (surface conduit or photo control)
 B - 1/2" NPS tapped holes
 C - Drill hole locations

**SAVE THESE INSTRUCTIONS
 READ THOROUGHLY BEFORE INSTALLATION**



LUMEN SELECTABLE INSTRUCTIONS

Different lumen levels can be achieved by setting the controller to the positions shown below.

Model	Rated Wattage (H / M / T)	CCT	Luminous Flux
ZPS-MB421-60W.V1-T1-E11-P3	35W/50W/70W	5000K	9450Lm
ZPS-MB421-120W.V1-T1-E11-P3	80W/100W/120W	3000K/4000K/5000K	13200Lm

Packaging

SKU	Box Dimension	Qty	Net Weight	Gross Weight
157087	14.96" x9.1" x5.12"	1 Pc/Box	6.6LBS	7.5LBS
157095	14.96" x9.1" x5.12"	1 Pc/Box	6.6LBS	7.5LBS

ZION™

3rd Gen
Wall Pack



Application Picture



SEMI CUTOFF WALL PACK