

IEC Pin and Sleeve

Fused Circuit-Lock® Ordering Information

30 and 60 Ampere – North American Ratings



IP66
SUITABILITY



Amps	Poles & Wires	Configuration Recep./ Conn.	Plug/ Inlet	Voltage	Mechanical Interlock	Mating Plug
30	3P 4W			120/240	HBL430MIF12W	HBL430P12W
	3P 4W			3Ø 240	HBL430MIF9W	HBL430P9W
	3P 4W			3Ø 480	HBL430MIF7W	HBL430P7W
	3P 4W			3Ø 600	HBL430MIF5W	HBL430P5W
	4P 5W			3Ø Y 277/480	HBL530MIF7W	HBL530P7W
	4P 5W			3Ø Y 347/600	HBL530MIF5W	HBL530P5W
60	3P 4W			120/240	HBL460MIF12W	HBL460P12W
	3P 4W			3Ø 240	HBL460MIF9W	HBL460P9W
	3P 4W			3Ø 480	HBL460MIF7W	HBL460P7W
	3P 4W			3Ø 600	HBL460MIF5W	HBL460P5W
	4P 5W			3Ø Y 120/208	HBL560MIF9W	HBL560P9W



ACFSNO



MICPK30



HBLRFT2

Note: 30A – 1.0 inch N.P.T. hub supplied; 60A – 1¼ inch hub supplied.

Auxiliary Contacts

Description	Catalog Number
Auxiliary contact, normally open, A600 pilot duty.	ACFSNO
Auxiliary contact, normally closed, A600 pilot duty.	ACFSNC

Watertight Closure Plug Kits

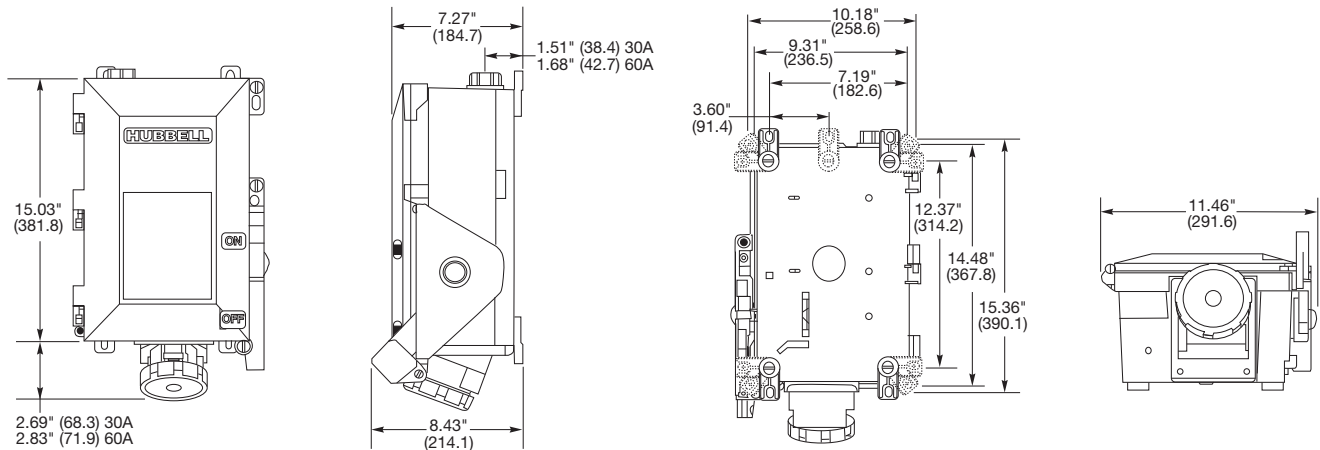
Description	Catalog Number
For 30A Circuit-Lock Unfused and Fused Pin and Sleeve mechanical interlocks.	MICPK30
For 60A and 100A Circuit-Lock Unfused and Fused Pin and Sleeve mechanical interlocks.	MICPK60

Replacement Mounting Feet

Description	Catalog Number
Replacement mounting feet and screws for 30A and 60A fused mechanical interlocks.	HBLRFT2*

*Package of 10 feet and 10 screws.

Dimensions



UL 1686 C1 Pin and Sleeve Insulgrip® Pin and Sleeve Device Listings

Materials (30, 60, 100, and 200 Amp)

Plug	Material
Housing	Valox® 357 (200A Aluminum)
Plug Shroud	Aluminum
Cord Clamps	Rynite® SST35 (200A Aluminum)
Clamp Nut	Nickel Plated Brass
Gland Cap	Rynite® SST35
Gland	Neoprene
O-Rings, Gaskets & Seals	Neoprene
Contact Carrier	Thermoset Polyester
Retainer	Thermoset Polyester
Sleeves	Brass
Box Terminal	Heat Treated & Zinc Plated Steel
Screws (Terminal, Assembly & Set)	Stainless Steel (300 Series)
Ground Standoff	Brass
Ground Bracket	Nickel Plated Spring Bronze
Locking Ring	Epoxy Painted Aluminum

Connector Body

Housing	Valox® 357 (200 Amp Aluminum)
Connector Shroud	Epoxy Painted Aluminum
Cord Clamps	Rynite® SST35
Clamp Nut	Nickel Plated Brass
Gland Cap	Rynite® SST35 (200A Aluminum)
Gland	Neoprene
O-Rings, Gaskets & Seals	Neoprene
Contact Carrier	Thermoset Polyester
Retainer	Thermoset Polyester
Pin	Brass
Pin Spring	Beryllium Copper
Box Terminal	Heat Treated & Zinc Plated Steel
Screws (Terminal, Assembly & Set)	Stainless Steel (300 Series)
Ground Standoff	Brass
Ground Bracket	Nickel Plated Spring Bronze
Cover	Epoxy Painted Aluminum
Cover Arm	Epoxy Painted Aluminum
Spring Guide	Stainless Steel (300 Series)
Springs (Arm & Wave)	Stainless Steel (300 Series)
Spring Washer	Stainless Steel (300 Series)
Hinge Bushing	Aluminum
Rivet	Aluminum

Receptacle

Housing/Flange	Epoxy Painted Aluminum
O-Rings, Gaskets & Seals	Neoprene
Contact Carrier	Thermoset Polyester
Retainer	Thermoset Polyester
Pin	Brass
Pin Spring	Beryllium Copper
Box Terminal	Heat Treated & Zinc Plated Steel
Screws (Terminal, Assembly & Set)	Stainless Steel (300 Series)
Ground Standoff	Brass
Ground Bracket	Steel
Cover	Epoxy Painted Aluminum
Cover Arm	Epoxy Painted Aluminum
Spring Guide	Stainless Steel (300 Series)
Springs (Arm & Wave)	Stainless Steel (300 Series)
Spring Washer	Stainless Steel (300 Series)
Hinge Bushing	Aluminum
Rivet	Aluminum

Valox® is a trademark of SABIC Innovative Plastics, acquired from General Electric Company. Rynite® is a registered trademark of E.I. DuPont Corp.

Typical Specification

Manufacturer's Identification Hubbell HBL430PS2W.

Description Plug, Power Supply.

Type 3 Pole + Earth.

Max. Rating 30 Amp, 250V DC, 600V AC, 50-400Hz.

Configuration UL 1686, Watertight, C1 Configuration.

Certification UL Listed, UL Standard 1682, UL 50, and UL 1010 (plugs only), CSA Certified to CSA Spec. C22.2 No. 182.1, No. 94 and No. 159 (plugs only), UL Listed and CSA Certified Type 4X.

Performance

Electrical

Dielectric Voltage	Withstands 3,000V AC.
Max. Working Voltage	600V AC RMS (i.e., minimum creepage and clearance distance of 6.4 millimeters, per UL 1682). Certified for current interrupting at full rated current.
Current Interrupting	
Temperature Rise	Max. 30° C temperature rise at full rated current after 50 cycles of overload at 150% of rated current.
Endurance	Up to 1,000 connect and disconnect cycles at full rated current and voltage.

Mechanical

Impact Resistance	Per CSA C22.2, No. 182.1, UL 1682.
Cord Grip Cable Retention	Per CSA C22.2, No. 182.1, UL 1682.
Cord Accommodation	Round portable service cords of diameters commensurate with the device rating as defined in UL Standard 62, CSA C22.2 No. 49 and the harmonized <HAR> European Standards.
Terminal Identification	Terminals identified in accordance with UL 1686 (1, 2, 3, Green).
Product Identification	Identification and ratings are permanently fastened to the device housing.

Environmental

Hose Down & Moisture Resistance	Type 3, 4, 4X per UL 50 and CSA 22.2, No. 94.
Flammability (Enclosure)	UL 94V-0 and CSA C22.2 No. 0.17.
Operating Temperatures	Maximum Continuous 75°C; Minimum 40° C without impact -25° with impact.

Hazardous Location (plug only) Class I, Division I & II, Groups B, C & D and Class II, Division I & II, Groups F & G per UL 1010 & CSA 22.2, No. 159.

Materials

Housings	Valox® 357 (200A Aluminum).
All Other Materials	Resistant to corrosion and chemical attack.

Watertight Application Guide

Industry	Watertight
Agriculture	Outdoor for fans, heaters, pumps, etc.
Chemical Processing	Where subject to water, corrosion.
Construction	Outdoors subject to severe weather conditions.
Entertainment	Outdoors subject to severe weather.
Food Processing	Where subject to water, corrosion.
Food Service	Areas subject to wash downs & heavy cleaning.
Light Manufacturing	Subjected to cleaning, solvents & chemicals.
Manufacturing	Where subject to water, corrosion.
Military	Outdoor construction or maintenance.