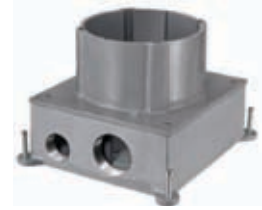




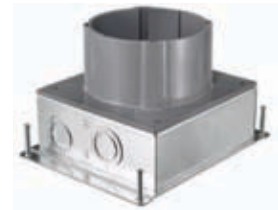
### Non-Metallic

Non-corrosive plastic parallel conduit hubs reduce labor and material cost, facilitating easier wire pull.



### Cast Iron

Corrosion resistant for on-grade applications.



### Stamped Steel

Economical and light weight for above-grade applications.



### Stamped Steel AV

Accommodates high-capacity multimedia applications including an oversized 1½" N.P.T. threaded data hub.

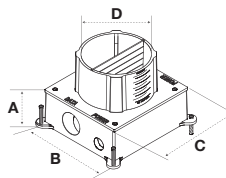
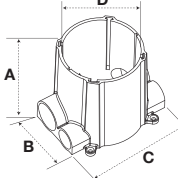

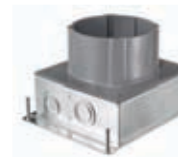
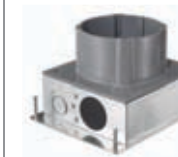

- Designed to Accommodate Multi-Service Applications with the Wide Offering of Hubbell SystemOne Sub-Plates
- Common/Exchangeable Sub-Plates
- Cut Box After Pour for Final Leveling
- RoHS Compliant

### Specifications



- Minimum pour depth 3" (S1PFB) or 3½" (S1CFB, S1SFB, S1SFBV)
- Standard 1" power entry
- Approved for use in City of Chicago



Dimensions Inches (mm)	Cast Iron	Steel	Steel AV	Non-Metallic	
 <p><b>Metal</b></p>	 <p><b>Non-Metallic</b></p>	 <p><b>S1CFB*</b></p>	 <p><b>S1SFB*</b></p>	 <p><b>S1SFBAV*</b></p>	 <p><b>S1PFB</b></p>
Min. Depth of Pour	3.50" (89)	3.50" (89)	3.50" (89)	3.00" (76)	
Adjustability	Fully	Fully	Fully	Fully	
Cubic Inch (cm <sup>3</sup> ) Capacity	156.0 cu. in. (2556 cm <sup>3</sup> )	175.7 cu. in. (2879 cm <sup>3</sup> )	177.5 cu. in. (2910 cm <sup>3</sup> )	100 cu. in. (1639 cm <sup>3</sup> )	
Dimensions – A	3.00" (76)	3.00" (76)	3.00" (76)	6.00" (152)	
Dimensions – B	7.26" (184)	7.50" (191)	7.50" (191)	5.58" (142)	
Dimensions – C	7.45" (189)	7.38" (187)	7.38" (187)	8.76" (222)	
Dimensions – D (Inside Diameter)	5.00" (127)	5.00" (127)	5.00" (127)	5.00" (127)	
Power Entries	1" N.P.T. Access Holes	¾", 1" Concentric KO	¾", 1" Concentric KO	1" Conduit Hub	
Data Entries	1½" N.P.T. Access Holes	¾", 1", 1¼" Concentric KO	1½" Threaded Hub (included)	1½" Conduit Hub	
Concrete Cover Included	✓	✓	✓	✓	
Closure Plugs Included	✓	–	✓	✓	
Reducers	–	–	–	✓ (see below)	
Accepts Hubbell SystemOne Universal Cover	✓	✓	✓	✓	
Cover Mounting Clips Included	✓	✓	✓	✓	
Non-Metallic Low Voltage Divider Included (S1DIV1)	✓	✓	✓	✓	

\*S1CFB, S1SFB, S1SFBAV are approved for use in the City of Chicago.  
Note: UL File Number E92074  
CSA File Number LR18416

**S1PFB** reducers included: Qty (2) combo plug/reducers 1" to ¾"  
Qty (2) reducers 1½" to 1"  
Qty (2) reducers 1½" to ¾"  
Qty (2) plugs 1½"

### Hubbell SystemOne Universal Covers

Description	Catalog No.
Carpet	<b>S1CFCxx</b>
Tile	<b>S1TFCxx</b>

xx = Color: **AL** (Aluminum Finish), **BRS** (Brass Finish), **BL** (Black), **GY** (Gray) and **I** (Ivory).



S1CFCLAL



S1TFLAL

### Floor Box Accessories

Description	Catalog No.
Abandonment plate, black	<b>S1AP4BL</b>
Abandonment plate, gray	<b>S1AP4GY</b>
Replacement side by side divider	<b>S1DIV1</b>
1½" threaded hub	<b>S1AVHUB15*</b>
Replacement universal cover mounting clips	<b>S1FBCLIP5PK</b>



S1AP4BL



S1DIV1



S1AVHUB15



S1FBCLIP5PK

\*For use with S1SFBAV ONLY. Permits feed-through applications. S1SFBAV floor box includes one (1) threaded hub.



Complies with UL514 A & C