

Ceiling LED Chandelier

CH97139
INSTALLATION SHEET

START FROM HERE

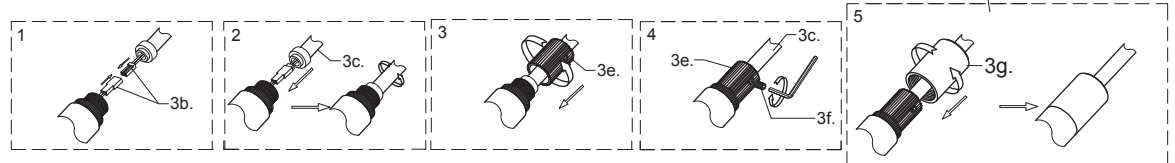
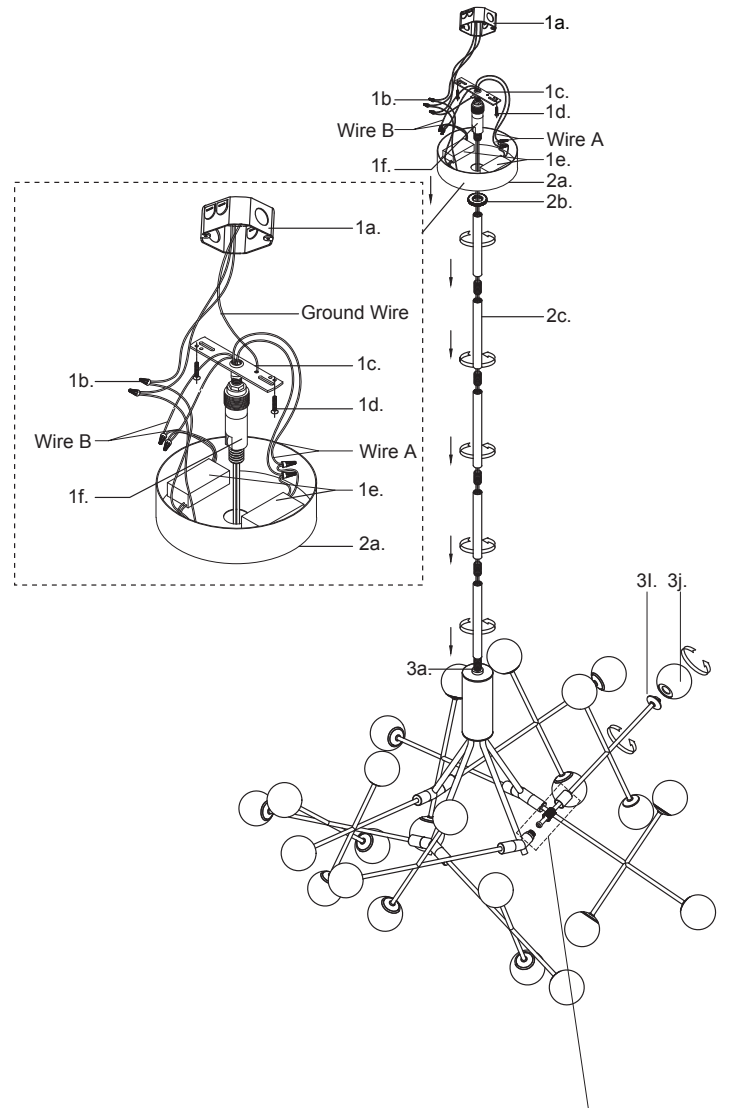
- Make sure **POWER** is **COMPLETELY OFF** at the fuse box
- Have your fixture installed by a qualified licensed electrician
- Prepare everything in a clear area
- Wear gloves at all time during this installation
- Read instructions carefully before you start assembly
- Keep this installation sheet for future reference

Technical Support: 1-855-855-8926

Please Note:

- This Kuzco LED fixtures come with pre-wired LED module(s)
- Unless instructed, Do Not touch any part of the LED module(s) as any unnecessary contact with the module could cause permanent damage
- Use ELV (Electronic Low Voltage) or TRIAC type of dimmer for dimming application

1. Remove fixture from its original package.
2. Separate mounting plate (1c) from canopy (2a) by removing lock ring (2b).
3. Attach the connector (1f) to mounting plate (1c) by the nut and connect to rods (2c).
4. Determine hanging height of fixture by securing rods (2c), feed the lock ring (2b) and canopy (2a) through rod (2c).
5. Attach mounting plate (1c) to electrical junction box (1a) using screws provided (1d) in hardware package.
6. Make proper electrical connections (black to hot "L", white to neutral "N", negative (black), positive (red) with wire nuts (1b) provided in hardware package. Connect ground wire directly to the ground screw at the mounting plate (1c).
7. Put the canopy (2a) to the ceiling and lock the canopy (2a) to connector (1f) by lock ring (2b).
8. Make low-voltage connection (3b) and twist cover on (3c).
9. Secure decorative arm with knurled nut (3e) lock with set screw using a hex key (3f), cover it with threaded cap (3g).
10. Thread decorative glass sphere (3j) into pendant base (3i).



KUZCO

19054 28th Avenue Surrey, BC Canada V3Z 6M3
T: 604 538 7162 TF: 1-855 85 KUZCO F: 604 538 7196
W: kuzcolighting.com
20191119