

Wireless Companion Switch, Dimmer, and Keypads

Cat. Nos. SBK00-CSW (Switch), SBK00-CDW (Dimmer),
SBK00-4DW (4-Button Keypad / Dimmer), and SBK00-4PW (4-Button Keypad with Preset Levels)
Ratings: Battery 3VDC



WARNINGS:

- **TO AVOID PERSONAL INJURY OR DEATH**, keep new and used batteries out of the reach of children. Seek immediate medical attention if a battery is ingested and follow medical advice.
- This product is to be installed and/or used in accordance with electrical codes and regulations.
- If you are unsure about any part of these instructions, consult an electrician.

CAUTIONS:

- These devices rely on wireless RF communication.
- Use two CR2025 coin cell batteries **ONLY**. Do not use a rechargeable battery. Use of an improper battery may cause damage to the device.
- For indoor use only.
- These devices are for surface mount or wallbox mount. They are not suitable for retrofit wall box installation where Class 1 wiring is present.

DI-000-SBK00-02C-W

INSTALLATION INSTRUCTIONS

ENGLISH

Cat. No.	Description
SBK00-CSW	Wireless Companion Switch
SBK00-CDW	Wireless Companion Dimmer
SBK00-4DW	Wireless Companion Keypad (ON, Raise, Lower, OFF)
SBK00-4PW	Wireless Companion Keypad with Preset Levels (MAX = 100%, MID = 50%, LOW = 20%, OFF = 0%)

Product Description

The Leviton wireless companion switch (SBK00-CSW), dimmer (SBK00-CDW) and 4-button keypads (SBK00-4DW and SBK00-4PW) pair with smart ceiling room controllers or sensors to provide lighting control where needed. These devices can be mounted in an existing wallbox or to flat wall surface near an entry point. In addition, these devices are battery powered and do not require any wiring to a power source or to the smart ceiling room controllers or sensors.

NOTES:

- Two replaceable CR2025 batteries with 5-year battery life are included.
- Use to connect to Leviton's smart ceiling room controllers or sensors.

Installation Notes

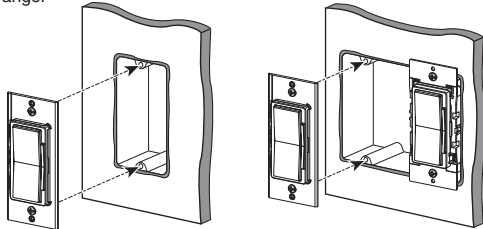
- The SBK00's are battery-powered companion devices that use wireless RF technology for communication to Leviton smart ceiling room controllers or sensors.
- These devices do not connect directly to the load or lights. Control of the load or lights is through the Leviton smart ceiling room controllers or sensors, which are line voltage devices (sold separately).
- For best results, mount these devices within 50 ft of a smart ceiling room controller or sensor.
- Do not install these devices in metal wall boxes or with metal wallplates, as this may result in poor RF performance.

Installation in a Wallbox

WARNING: TO AVOID FIRE, SHOCK, OR DEATH, turn OFF power at the circuit breaker.

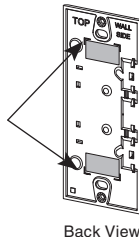
To install in a standard NEMA electrical box in single-gang or multi-gang installation:

1. Take note of the TOP marking on the reverse side of the device.
- NOTE:** Make sure the device is within 50 ft of the smart room controller or sensor.
2. Line up the device with the screw holes in the desired location on the wallbox.
3. Insert and tighten the screws in the innermost screw holes of the wallbox. Do NOT overtighten the screws.
- NOTE:** Installation in a metal wall box can weaken the RF signal and reduce the wireless range.

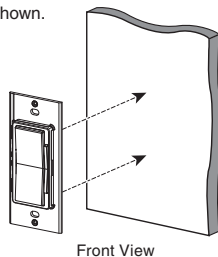


Installation on a Wall Surface

1. Select a clear wall surface within 50 ft of the smart room controller or sensor.
2. Place the included adhesive tape on the reverse side of the device, and align the top and bottom pieces of tape with the corner markings molded into the base.
3. Take note of the TOP and WALL SIDE markings on the back of the device and gently affix the device to the wall surface with the tape. Make sure the device is secure and level.



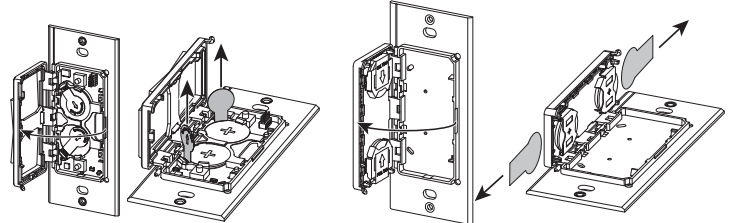
NOTE: Cat. No. SBK00-CDW shown.



Powering ON

The device comes with two CR2025 batteries (already installed).

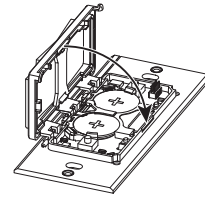
1. To power ON the device, place your finger on the indent in the base.
2. Open the device by gently rotating the frame to the left using the hinges.
3. Grasp and pull up each pull tab by its circular portion to remove. Remove both pull tabs (one for each battery).



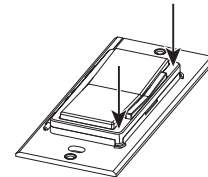
Cat. No. SBK00-Cxx

Cat. No. SBK00-4xx

4. Close the device by gently rotating the frame to the right using the hinges.



5. Press down firmly in the corners until the device snaps closed.



Pairing

Follow the steps below to pair the device with a compatible smart ceiling room controller or sensor.

NOTES:

- Activate and pair one device at a time.
 - Make sure the device is close to the line voltage sensor to connect successfully and reduce interference.
 - In addition, you can mount in a wallbox or on a wall surface after you pair the device.
1. Download and open the Leviton Smart Sensor App.
 2. Using the Leviton Smart Sensor App, scan for devices and connect to sensor or room controller you'd like to pair the SBK00 with. Under the advanced settings, click on "wireless companion" and follow pairing instructions.
 3. Press top rocker or button on companion 5-times to place in pairing mode and confirm the Status LED is blinking GREEN.
 - NOTE:** If not paired after 10 minutes, the device goes into a standby state to preserve battery life. To place it back into the Pairing mode, press the top rocker or button five times. The Status LED flashes GREEN.
 4. Using the Leviton Smart Sensor App, find the SBK00 device you want to pair with the smart room controller or sensor.
 5. Follow the prompts in the Leviton Smart Sensor App to pair a "wireless companion" device.
 6. Once the device has been installed and successfully paired, test control by pressing the rocker or buttons ON and OFF, and confirm that the lights work properly.

NOTES:

- Control options include primary load, secondary load (if applicable), and 3-way (if applicable).
- If you accidentally connect to the wrong smart room controller or sensor, reset to factory default settings, restart the pairing process, and connect to the appropriate device using the Leviton Smart Sensor App.
- Maximum of 4 wireless companion devices can be paired to a single smart sensor or room controller.

Factory Default Reset

1. Hold the top rocker or button for 14 seconds.
2. After the first 7 seconds, the status light will turn YELLOW. Continue to hold.
3. After 7 more seconds, the status light will quickly flash RED/YELLOW.
4. Release the top rocker or button and the device will reset. This will remove all pairing associations.

WEB VERSION

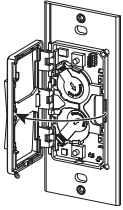
Attach the Wallplate

You can attach any Decora®-style standard or screwless wallplate in single- and multi-gang configurations.

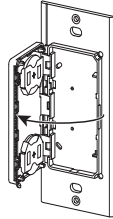
1. Insert the screws into the outermost screw holes of the wallplate mounting bracket, and tighten until snug. Do NOT overtighten.
2. Snap on the wallplate.

Changing the Batteries

1. Remove the wallplate. (If using a screwless wallplate, you do not have to remove the mounting bracket.)
2. Place your finger on the indent in the base, and open the device by gently rotating the frame to the left using the hinges.

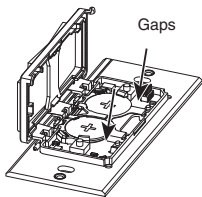


Cat. No. SBK00-Cxx

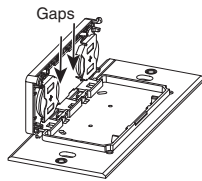


Cat. No. SBK00-4xx

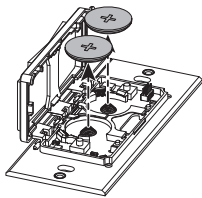
3. Place your finger in the gaps indicated by the arrows, and gently pull the batteries out of the holder. While lifting the batteries, press on battery holder tabs to release batteries.



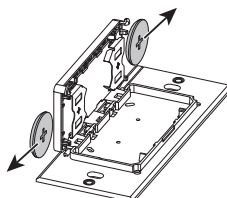
Cat. No. SBK00-Cxx



Cat. No. SBK00-4xx

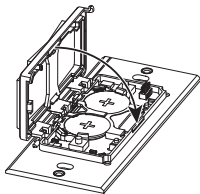


Cat. No. SBK00-Cxx

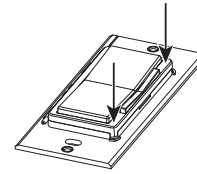


Cat. No. SBK00-4xx

4. In each battery space, insert a CR2025 battery only.
5. Close the device by gently rotating the frame to the right using the hinges.



6. Press down firmly in the corners until the device snaps closed.
7. Re-attach the wallplate.



Specifications

Type	Specification
Operating Temperature	32°F - 104°F (0°C - 40°C)
Operating Humidity	Relative humidity (non-condensing): 10%-90%
Storage Temperature Range	14°F - 185°F (10° - 85°C)
Batteries	CR2025 x2; 3 V
Network	2.4 GHz
Range	50 ft
IP Rating	IP20

Status/Diagnostic LEDs

Color	Activity	Status
GREEN	One Blink	Button has been pressed (normal feedback) and device pairing confirmation.
GREEN	Fast Blink	Device is in the Pairing mode.
YELLOW	One Blink	Device lost its connection to the Smart Ceiling Room Controller or Sensor or is not paired yet.
RED	One Blink	Low battery

What to do if...

If the device is not performing as expected, review the troubleshooting information below, or contact Leviton's Technical Support team.

The device does not pair to the smart room controller or sensor.

- Make sure you are pairing to a compatible device.
- Ensure the device is within 50 ft of the room controller or sensor. In addition, make sure you followed the pairing instructions in the Leviton Smart Sensor App completely.

How do I know if I have a compatible smart room controller or sensor?

Go to leviton.com/smartsensors for additional product details and list of compatible devices.

The device has an intermittent connection to the room controller or sensor:

- Ensure the device is within 50 ft of the room controller or sensor.
- This device does not transmit through exterior surfaces. Environmental factors can impact the wireless signal. Before installing, consider materials, such as concrete or steel reinforced floors, ceilings, walls, masonry, cinder block, and reinforced materials, such as plaster and stucco that may interfere with the wireless signal.
- Check to make sure the device does not have a low battery. (See the Diagnostic LEDs table.)

Can one wireless switch or dimmer control multiple smart room controllers or sensors?

Yes. If the room controllers or sensors are grouped together using the Leviton Smart Sensor App and the switch configuration is set to "Network", the device can control all devices.

How do you clean the device?

Use a damp cloth with mild soap. DO NOT use disinfecting products, including foggers, sprays, or other types of atomized cleaning agents.

FCC STATEMENT

This equipment has been tested and found to comply with the limits for a Class B digital device, pursuant to part 15 of the FCC Rules. These limits are designed to provide reasonable protection against harmful interference in a residential installation. This equipment generates, uses and can radiate radio frequency energy and, if not installed and used in accordance with the instructions, may cause harmful interference to radio communications. However, there is no guarantee that interference will not occur in a particular installation. If this equipment does cause harmful interference to radio or television reception, which can be determined by turning the equipment off and on, the user is encouraged to try to correct the interference by one or more of the following measures:

- Reorient or relocate the receiving antenna.
- Connect the equipment into an outlet on a circuit different from that to which the receiver is connected.
- Increase the separation between the equipment and receiver.
- Consult the dealer or an experienced radio/TV technician for help.

IC STATEMENT

This device complies with Industry Canada license-exempt RSS standard(s). Operation is subject to the following two conditions: (1) this device may not cause interference, and (2) this device must accept any interference, including interference that may cause undesired operation of the device.

FCC SUPPLIERS DECLARATION OF CONFORMITY (sDoC): Models SBK00-CSW (Switch), SBK00-CDW (Dimmer), SBK00-4DW (4-Button Keypad / Dimmer), and SBK00-4PW (4-Button Keypad with Preset Levels) are manufactured by Leviton Manufacturing, Inc., 201 N. Service Road, Melville, NY, www.leviton.com. This device complies with part 15 of the FCC Rules. Operation is subject to the following two conditions: (1) This device may not cause harmful interference, and (2) this device must accept any interference received, including interference that may cause undesired operation.

Any changes or modifications not expressly approved by Leviton Manufacturing Co., could void the user's authority to operate the equipment.

RF EXPOSURE AND CO-LOCATION: To comply with FCC OET Bulletin 65 and ISED RF exposure limits for general population and uncontrolled exposure, this device shall be installed and operated with a minimum distance of 7.9 inches (20 cm) between the radiator and your body. Also, must not be co-located or operated in conjunction with any other antenna or transmitter.

Patents covering this product, if any, can be found on www.leviton.com/patents.

LEVITON and the Leviton logo are trademarks of Leviton Manufacturing Co., Inc.

FOR CANADA ONLY

For warranty information and/or product returns, residents of Canada should contact Leviton in writing at **Leviton Manufacturing of Canada ULC** to the attention of the **Quality Assurance Department, 165 Hymus Blvd, Pointe-Claire (Quebec), Canada H9R 1E9 or by telephone at 1-800-405-5320.**

LIMITED 5 YEAR WARRANTY

For Leviton's limited 5 year product warranty, go to www.leviton.com. For a printed copy of the warranty, call 1-800-824-3005.