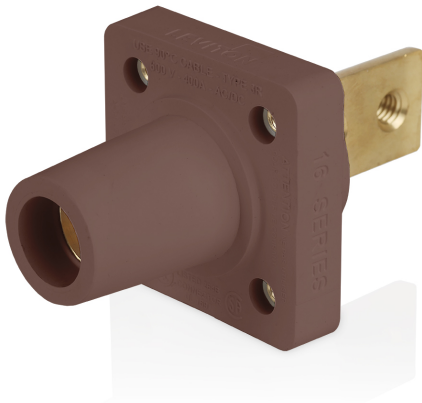


16R34-1H



16 Series Female Receptacle, 90-Degree, #2-4/0 AWG, Double Hole Bus Bar, Self-Clinching Nuts

16 Series Taper Nose Cam-Type Female Panel Mount Receptacle, 90-Degree, #2-4/0 AWG, Double Hole Bus Bar, 400 Amp Max, 600 VAC/DC, Self-Clinching Nuts, Brown

ROHS Compliant : Yes

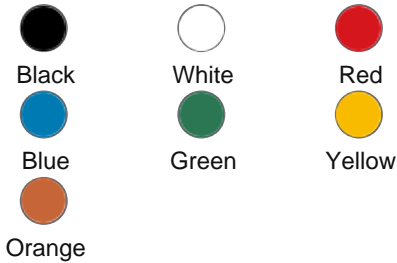
- NEMA 3R rated for outdoor use when mated
- Color-coding provides fast and easy phase identification
- Common applications: entertainment, data centers, power distribution, backup power, construction sites, disaster recovery and other temporary power applications

Color :  Brown

UPC Code : 078477022795

Country Of Origin : Mexico

Available Colors :



Technical Information

Electrical Specifications

Max. Amperage : 400A

Max. Voltage : 639 VAC/DC

Short Circuit Current Rating :
35kA

Mechanical Specifications

Cable Size Range : #2-4/0 AWG

Connection Type : Bus Bar-Double Hole

Gender : Female

Termination Type : Taper-Nose

Standards & Certifications

CSA : 1691

NEMA Rating : Type 3R

UL : 1691

Material Specifications

Contact : Brass

Insulators : Santoprene TPV

Product Features

Color : Brown

Series : 16 Series

Special Features : PEM/Self-Clinching Nuts

Warranty

Warranty : 2-Year Limited

\$(wiring_diagram)

\$(dimensional_drawing)

SPECIFICATION SUBMITTAL

| | | | | | |
|--|---|--|--|--|--|
| <p>JOB NAME:</p> <input style="width: 90%; height: 20px;" type="text"/> | <p>CATALOG NUMBERS:</p> <table border="1" style="width: 100%;"> <tr> <td style="width: 50%; height: 20px;"></td> <td style="width: 50%; height: 20px;"></td> </tr> <tr> <td style="width: 50%; height: 20px;"></td> <td style="width: 50%; height: 20px;"></td> </tr> </table> | | | | |
| | | | | | |
| | | | | | |
| <p>JOB NUMBER:</p> <input style="width: 90%; height: 20px;" type="text"/> | | | | | |

Telephone: +1-800-323-8920 · FAX: +1-800-832-9538 · Tech Line (8:30AM-7:30PM E.S.
T. Monday-Friday): +1-800-824-3005

Leviton Manufacturing of Canada, Ltd.

165 Hymus Boulevard, Pointe Claire, Quebec H9R 1E9 · Telephone: +1-800-461-2002 ·
FAX: +1-800-824-3005 ·

Leviton S. de R.L. de C.V.

Lago Tana 43, Mexico DF, Mexico CP 11290 · Tel.: (+52)55-5082-1040 · FAX: (+52)
5386- 1797 ·

Visit our Website at: www.leviton.com

© 2026 Leviton Manufacturing Co., Inc. All Rights Reserved. Subject to change without
notice.

Leviton has a global presence.

If you would like to know where your local Leviton office is located please go to:

www.leviton.com/company/about-leviton/locations

© 2026 Leviton Manufacturing Co., Inc.