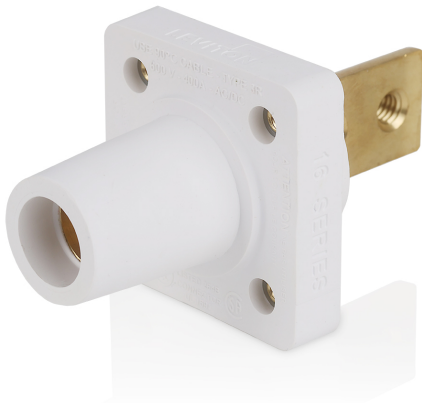


# 16R34-1W



16 Series Female Receptacle, 90-Degree, #2-4/0 AWG, Double Hole Bus Bar, Self-Clinching Nuts

16 Series Taper Nose Cam-Type Female Panel Mount Receptacle, 90-Degree, #2-4/0 AWG, Double Hole Bus Bar, 400 Amp Max, 600 VAC/DC, Self-Clinching Nuts, White

**ROHS Compliant :** Yes

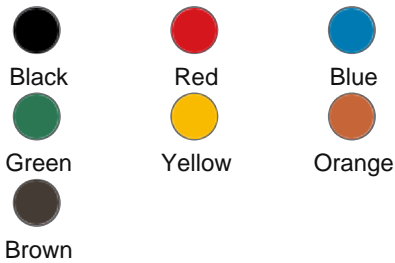
- NEMA 3R rated for outdoor use when mated
- Color-coding provides fast and easy phase identification
- Common applications: entertainment, data centers, power distribution, backup power, construction sites, disaster recovery and other temporary power applications

**Color :**  White

**UPC Code :** 078477022689

**Country Of Origin :** Mexico

**Available Colors :**



## Technical Information

Electrical Specifications

**Max. Amperage :** 400A

**Max. Voltage :** 633 VAC/DC

**Short Circuit Current Rating :**  
35kA

Mechanical Specifications

**Cable Size Range :** #2-4/0 AWG

**Connection Type :** Bus Bar-Double Hole

**Gender :** Female

**Termination Type :** Taper-Nose

Standards & Certifications

**CSA :** 1691

**NEMA Rating :** Type 3R

**UL :** 1691

Material Specifications

**Contact :** Brass

**Insulators :** Santoprene TPV

Product Features

**Color :** White

**Series :** 16 Series

**Special Features :** PEM/Self-Clinching Nuts

Warranty

**Warranty :** 2-Year Limited

\$(wiring\_diagram)

\$(dimensional\_drawing)

### SPECIFICATION SUBMITTAL

<p><b>JOB NAME:</b></p> <input style="width: 90%; height: 20px;" type="text"/>	<p><b>CATALOG NUMBERS:</b></p> <table border="1" style="width: 100%;"> <tr> <td style="width: 50%; height: 20px;"></td> <td style="width: 50%; height: 20px;"></td> </tr> <tr> <td style="width: 50%; height: 20px;"></td> <td style="width: 50%; height: 20px;"></td> </tr> </table>				
<p><b>JOB NUMBER:</b></p> <input style="width: 90%; height: 20px;" type="text"/>					

**Leviton Manufacturing Co., Inc**

201 North Service Road, Melville, NY 11747

Telephone: +1-800-323-8920 · FAX: +1-800-832-9538 · Tech Line (8:30AM-7:30PM E.S.  
T. Monday-Friday): +1-800-824-3005

**Leviton Manufacturing of Canada, Ltd.**

165 Hymus Boulevard, Pointe Claire, Quebec H9R 1E9 · Telephone: +1-800-461-2002 ·  
FAX: +1-800-824-3005 ·

**Leviton S. de R.L. de C.V.**

Lago Tana 43, Mexico DF, Mexico CP 11290 · Tel.: (+52)55-5082-1040 · FAX: (+52)  
5386- 1797 ·

**Visit our Website at: [www.leviton.com](http://www.leviton.com)**

© 2026 Leviton Manufacturing Co., Inc. All Rights Reserved. Subject to change without  
notice.

**Leviton has a global presence.**

If you would like to know where your local Leviton office is located please go to:

[www.leviton.com/company/about-leviton/locations](http://www.leviton.com/company/about-leviton/locations)

**© 2026 Leviton Manufacturing Co., Inc.**