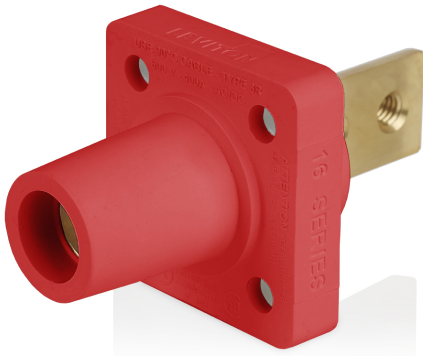


# 16R34-R



16 Series Female Receptacle, 90-Degree, #2-4/0 AWG, Double Hole Bus Bar

16 Series Taper Nose Cam-Type Female Panel Mount Receptacle, 90-Degree, #2-4/0 AWG, Double Hole Bus Bar, 400 Amp Max, 600 VAC/DC, Red

**ROHS Compliant** : Yes

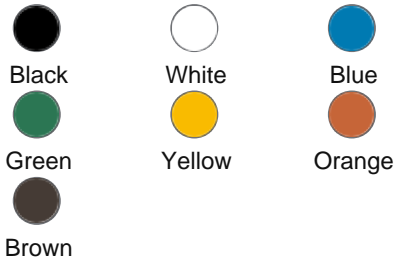
- NEMA 3R rated for outdoor use when mated
- Color-coding provides fast and easy phase identification
- Common applications: entertainment, data centers, power distribution, backup power, construction sites, disaster recovery and other temporary power applications

**Color** :  Red

**UPC Code** : 078477026076

**Country Of Origin** : Mexico

**Available Colors :**



## Technical Information

Electrical Specifications

**Max. Amperage** : 400A

**Max. Voltage** : 650 VAC/DC

**Short Circuit Current Rating** : 35kA

Mechanical Specifications

**Cable Size Range** : #2-4/0 AWG

**Connection Type** : Bus Bar-Double Hole

**Gender** : Female

**Termination Type** : Taper-Nose

Standards & Certifications

**CSA** : 1691

**NEMA Rating** : Type 3R

**UL** : 1691

Material Specifications

**Contact** : Brass

**Insulators** : Santoprene TPV

Product Features

**Color** : Red

**Series** : 16 Series

Warranty

**Warranty** : 2-Year Limited

## Dimensional Drawing

