

2411E

Black & White® Lever Edge™ Locking Plug

Black & White® Lever Edge™ 20 Amp 125/250 Volt Locking Plug, NEMA L14-20P, Grounding, Industrial Grade



UPC Code : 078477021224

Country Of Origin : Mexico

NEMA :  L14-20P

What happens when you combine Leviton's industry-leading Black and White® line of straight blade and locking plugs and connectors with the future of wiring? Meet Lever Edge™ wiring devices, designed for simple installations, time savings, superior performance, and long-lasting reliability. Simply open the lever, push the wire into the color-coded terminals, click down, and you're done.

- **Secure:** Lever mechanism provides a strong, secure wire connection
- **Reliable Connection:** Levers reduce risk of loose wire termination
- **User Safety:** No tool required for wire-termination
- **Time-savings:** Quick wiring and unwiring
- **Durable:** Exceptional performance against heat and vibration
- **User-friendly design:** Color-coded lever terminals reduce risk of miswiring

Technical Information

Electrical Specifications

Amperage : 20 A

Current Interrupting : Certified for current interrupting at full rated current

Dielectric Voltage :
Withstands 2000V per UL498

Grounding : Grounding

Pole(s) : 3

Temperature Rise : Max 30 C after 250 cycles OL at 200 percent rated

Voltage : 125 VAC/250 VAC

Wire(s) : 4

Environmental Specifications

Environment : Dry

Flammability Rating : Rated HB or better UL94

Operating Temperature : -40° C to 60°C

Material Specifications

Assembly Screws : #6 Zinc Plated Steel

Lever Material : Thermoplastic

Back Cover : Thermoplastic (clear)

Blades/Contacts : Phosphor Bronze

Body : Impact Modified Nylon

Mechanical Specifications

At Rated Voltage : 2 HP L-L / 1 HP L-N

Cord Range : 0.56 - 0.78

Product ID : Ratings are permanently marked on device

Wire Gauge : 14-10 AWG

Lever ID : Black-Hot, Green-Ground, White-Neutral

Clamp Insert : Nylon
Cord-Clamp : Nylon
Wire Module : Nylon

Assembly Screw Torque : 10-14 in-lbs

Cord Clamp Screw Torque : 12-14 in-lbs

Termination : Color-Coded Levers

Product Features

Brand : Black & White|Lever Edge
Color : Black-White
Device Type : Locking Plug
NEMA : L14-20P

Standards & Certifications

ANSI : ANSI C-73
CSA C22.2 No. 42 : File E13393
NEMA : WD-6
UL Fed Spec WC-596 : File E13393
UL498 : File E13393

Warranty

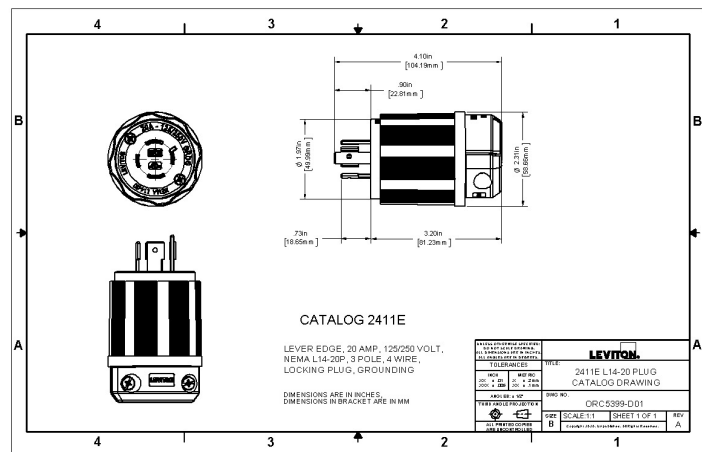
Warranty : 2-Year Limited

Patents *

US12244112

This list is provided for patent marking purposes only. A good faith effort is made to maintain the accuracy and completeness of this list. No legal inference should be drawn from the omission of a patent from this list.

Dimensional Drawing



SPECIFICATION SUBMITTAL

JOB NAME: <input style="width: 90%; height: 20px;" type="text"/> JOB NUMBER: <input style="width: 90%; height: 20px;" type="text"/>	CATALOG NUMBERS: <table border="1" style="width: 100%; height: 40px;"> <tr> <td style="width: 50%;"></td> <td style="width: 50%;"></td> </tr> </table> <table border="1" style="width: 100%; height: 40px;"> <tr> <td style="width: 50%;"></td> <td style="width: 50%;"></td> </tr> </table>				

Telephone: +1-800-323-8920 · FAX: +1-800-832-9538 · Tech Line (8:30AM-7:30PM E.S.
T. Monday-Friday): +1-800-824-3005

Leviton Manufacturing of Canada, Ltd.

165 Hymus Boulevard, Pointe Claire, Quebec H9R 1E9 · Telephone: +1-800-461-2002 ·
FAX: +1-800-824-3005 ·

Leviton S. de R.L. de C.V.

Lago Tana 43, Mexico DF, Mexico CP 11290 · Tel.: (+52)55-5082-1040 · FAX: (+52)
5386- 1797 ·

Visit our Website at: www.leviton.com

© 2026 Leviton Manufacturing Co., Inc. All Rights Reserved. Subject to change without
notice.

Leviton has a global presence.

If you would like to know where your local Leviton office is located please go to:

www.leviton.com/company/about-leviton/locations

© 2026 Leviton Manufacturing Co., Inc.