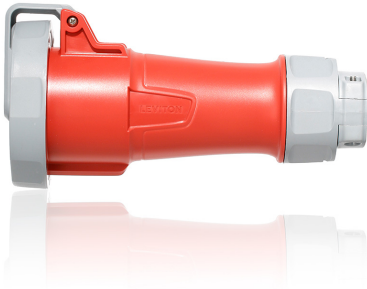


# 430C6WLEV



Color :  Red

UPC Code : 078477025024

Country Of Origin : Mexico

LEV Series IEC Pin & Sleeve Connector

30/32 Amp, 380-415 Volt 3-Phase, 3P, 4W, LEV Series North American-Rated IEC 60309-1 & 60309-2 Pin & Sleeve Connector, Industrial Grade, IP66/IP67/IP68/IP69K, Watertight - Red

LEV Series IEC 60309 Pin & Sleeve Devices are designed to simplify your installation, endure the harshest environments and improve safety and productivity:

- Improved speed of assembly with threaded housings that have less screws for reduced installation time
- Superior watertight ratings including IP69K for washdown /outdoor applications and industry exclusive submersible IP68
- Best in class 5-year limited warranty!

*Leviton Pin & Sleeve devices are UL listed components and suitable for use in prefabricated wiring assemblies when wired in accordance with UL 1007.*

[LEV Series Savings Calculator](#)

## Technical Information

### Electrical Specifications

**Amperage** : 30/32 A

**Current Interrupting** : Certified for current interrupting at full-rated current and voltage

**Dielectric Voltage** : 3000V for 1 min.

**Endurance** : 1000 cycles rated V and I load, 1000 cycles no-load (30A)

**Horsepower Rating** : 5 HP

**Max. Voltage** : 600V

**Overload UL20 Test** : 50 cycles

**Phase** : 3-Phase

**Pole** : 3

**SCCR** : 200kA

**Temperature Rise** : Max 30°C rise at full rated current (after overload)

**Voltage** : 380/415 VAC

**Wire** : 4

### Environmental Specifications

**Corrosion Resistance** : Salt fog tested

**Flammability** : Rated V-0 (Contact Carrier), HB or better (Housing) per UL94

**IP Rating** : IP66, IP67, IP68, IP69K

**NEMA Enclosure Type** : 3R, 4X, 6P and 12

**NSF** : 14159-1, Hygenic Requirement for the Design of Meat & Poultry Processing Equipment

**UV Resistance** : UV stabilized F1 rated housings

[Material Specifications](#)

[Mechanical Specifications](#)

**Assembly Screws** : 303  
Stainless Steel

**Contact Carrier** : Glass filled  
Nylon

**Grommet/Gasket** : NBR/Buna  
N

**Housing** : PBT

**Terminal Screws** : 303  
Stainless Steel

**Cable Clamp Screw Torque** :  
10 in-lb

**Conductor Range** : #10 AWG  
to #8 AWG

**Crush Test** : 250 lbs for 1 min  
after -25°C for 6 hrs

**Hardware Head Type** : Hex  
style socket screws for  
terminals, combination screws  
for all others

**Impact** : Drop from 30" 8 times  
after conditioning to -25°C, for 6  
hours; Drop from 72" after  
conditioning to -35°C, for 6  
hours

**Screw Terminal Torque** : 20  
in-lb

Product Features

**Clock Position** : 6 o'clock

**Color** : Red

**Configuration** : North American

**Device Type** : Connector

**Product Markings** : Brand, UL,  
CE and environmental ratings  
molded in. Item number,  
ampacity, voltage, phases, HP,  
NSF on label

**Series** : LEV Series

Standards and Certifications

**CE** : CE certification

**CSA** : CSA C22.2 No 182.1-13  
(Harmonized with UL 1682)

**IEC Rating** : 60309-1, 60309-2

**NOM** : NOM –ANCE standards

**RoHS** : RoHS compliant  
components

**UL** : UL 1686 C2, UL 1682, UL  
Classified to IEC 60309-1,  
60309-2

Warranty

**Warranty** : 5-Year Limited

**Patents\***

MX417278

US11515665

US12149019

MX414018

This list is provided for patent marking purposes only. A good faith effort is made to maintain the accuracy and completeness of this list. No legal inference should be drawn from the omission of a patent from this list.

\$(wiring\_diagram)

\$(dimensional\_drawing)

**SPECIFICATION SUBMITTAL**

<b>JOB NAME:</b> <input type="text"/>	<b>CATALOG NUMBERS:</b> <input type="text"/> <input type="text"/>	
<b>JOB NUMBER:</b> <input type="text"/>	<input type="text"/>	<input type="text"/>

201 North Service Road, Melville, NY 11747

Telephone: +1-800-323-8920 · FAX: +1-800-832-9538 · Tech Line (8:30AM-7:30PM E.S.  
T. Monday-Friday): +1-800-824-3005

**Leviton Manufacturing of Canada, Ltd.**

165 Hymus Boulevard, Pointe Claire, Quebec H9R 1E9 · Telephone: +1-800-461-2002 ·  
FAX: +1-800-824-3005 ·

**Leviton S. de R.L. de C.V.**

Lago Tana 43, Mexico DF, Mexico CP 11290 · Tel.: (+52)55-5082-1040 · FAX: (+52)  
5386- 1797 ·

**Visit our Website at: [www.leviton.com](http://www.leviton.com)**

© 2026 Leviton Manufacturing Co., Inc. All Rights Reserved. Subject to change without  
notice.

**Leviton has a global presence.**

If you would like to know where your local Leviton office is located please go to:  
[www.leviton.com/company/about-leviton/locations](http://www.leviton.com/company/about-leviton/locations)

**© 2026 Leviton Manufacturing Co., Inc.**