

430P6WLEV

LEV Series IEC Pin & Sleeve Plug

30/32 Amp, 380-415 Volt 3-Phase, 3P, 4W, LEV Series North American-Rated IEC 60309-1 & 60309-2 Pin & Sleeve Plug, Industrial Grade, IP66/IP67/IP68/IP69K, Watertight - Red

LEV Series IEC 60309 Pin & Sleeve Devices are designed to simplify your installation, endure the harshest environments and improve safety and productivity:

- Threaded housing design removes several screws making installation quicker and easier
- Superior watertight ratings including IP69K for washdown /outdoor applications and industry exclusive IP68 for long-term submersion
- NSF certified sanitary design trusted for use in food & beverage facilities

Leviton Pin & Sleeve devices are UL listed components and suitable for use in prefabricated wiring assemblies when wired in accordance with UL 1007.

[LEV Series Savings Calculator](#)

Technical Information

Electrical Specifications

Amperage : 30/32 A

Current Interrupting : Certified for current interrupting at full-rated current and voltage

Dielectric Voltage : 3000V for 1 min.

Endurance : 1000 cycles rated V and I load, 1000 cycles no-load (30A)

Horsepower Rating : 5 HP

Max. Voltage : 600V

Overload UL20 Test : 50 cycles

Phase : 3-Phase

Pole : 3

SCCR : 200kA

Temperature Rise : Max 30°C rise at full rated current (after overload)

Voltage : 380/415 VAC

Wire : 4

Environmental Specifications

Corrosion Resistance : Salt fog tested

Flammability : Rated V-0 (Contact Carrier), HB or better (Housing) per UL94

IP Rating : IP66, IP67, IP68, IP69K

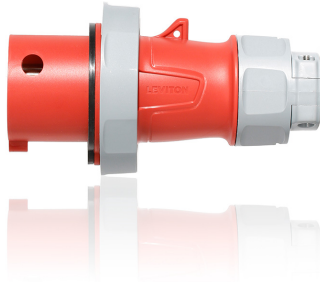
NEMA Enclosure Type : 3R, 4X, 6P and 12

NSF : 14159-1, Hygenic Requirement for the Design of Meat & Poultry Processing Equipment

UV Resistance : UV stabilized F1 rated housings

[Material Specifications](#)

[Mechanical Specifications](#)



Color :  Red

UPC Code : 078477025017

Country Of Origin : Mexico

Assembly Screws : 303
Stainless Steel

Contact Carrier : Glass filled
Nylon

Grommet/Gasket : NBR/Buna
N

Housing : PBT

Terminal Screws : 303
Stainless Steel

Cable Clamp Screw Torque :
10 in-lb

Conductor Range : #10 AWG
to #8 AWG

Crush Test : 250 lbs for 1 min
after -25°C for 6 hrs

Hardware Head Type : Hex
style socket screws for
terminals, combination screws
for all others

Impact : Drop from 30" 8 times
after conditioning to -25°C, for 6
hours; Drop from 72" after
conditioning to -35°C, for 6
hours

Screw Terminal Torque : 20
in-lb

Product Features

Clock Position : 6 o'clock

Color : Red

Configuration : North American

Device Type : Plug

Product Markings : Brand, UL,
CE and environmental ratings
molded in. Item number,
ampacity, voltage, phases, HP,
NSF on label

Series : LEV Series

Standards and Certifications

CE : CE certification

CSA : CSA C22.2 No 182.1-13
(Harmonized with UL 1682)

IEC Rating : 60309-1, 60309-2

NOM : NOM –ANCE standards

RoHS : RoHS compliant
components

UL : UL 1686 C2, UL 1682, UL
Classified to IEC 60309-1,
60309-2

Warranty

Warranty : 5-Year Limited

Patents *

MX417278

US12149019

US11515665

MX414018

This list is provided for patent marking purposes only. A good faith effort is made to maintain the accuracy and completeness of this list. No legal inference should be drawn from the omission of a patent from this list.

\$(wiring_diagram)

\$(dimensional_drawing)

SPECIFICATION SUBMITTAL

| | | |
|--|--|----------------------|
| JOB NAME: <input type="text"/> | CATALOG NUMBERS: <input type="text"/> <input type="text"/> | |
| JOB NUMBER: <input type="text"/> | <input type="text"/> | <input type="text"/> |

201 North Service Road, Melville, NY 11747

Telephone: +1-800-323-8920 · FAX: +1-800-832-9538 · Tech Line (8:30AM-7:30PM E.S.
T. Monday-Friday): +1-800-824-3005

Leviton Manufacturing of Canada, Ltd.

165 Hymus Boulevard, Pointe Claire, Quebec H9R 1E9 · Telephone: +1-800-461-2002 ·
FAX: +1-800-824-3005 ·

Leviton S. de R.L. de C.V.

Lago Tana 43, Mexico DF, Mexico CP 11290 · Tel.: (+52)55-5082-1040 · FAX: (+52)
5386- 1797 ·

Visit our Website at: www.leviton.com

© 2026 Leviton Manufacturing Co., Inc. All Rights Reserved. Subject to change without
notice.

Leviton has a global presence.

If you would like to know where your local Leviton office is located please go to:
www.leviton.com/company/about-leviton/locations

© 2026 Leviton Manufacturing Co., Inc.