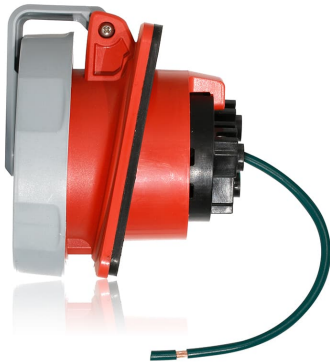


530R6WLEV



LEV Series IEC Pin & Sleeve Receptacle

30/32 Amp, 200/346 - 240/415 Volt 3-Phase, 4P, 5W, LEV Series North American-Rated IEC 60309-1 & 60309-2 Pin & Sleeve Receptacle, Industrial Grade, IP66/IP67/IP68/IP69K, Watertight - Red

LEV Series IEC 60309 Pin & Sleeve Devices are designed to simplify your installation, endure the harshest environments and improve safety and productivity:

- Nickel-plated pins and sleeves are self-cleaning and corrosion-resistant
- Superior watertight ratings including IP69K for washdown /outdoor applications and industry exclusive IP68 for long-term submersion
- NSF certified sanitary design trusted for use in food & beverage facilities

Leviton Pin & Sleeve devices are UL listed components and suitable for use in prefabricated wiring assemblies when wired in accordance with UL 1007.

[LEV Series Savings Calculator](#)

Color :  Red

UPC Code : 078477025055

Country Of Origin : Mexico

Patents *

MX417278

US12149019

This list is provided for patent marking purposes only. A good faith effort is made to maintain the accuracy and completeness of this list. No legal inference should be drawn from the omission of a patent from this list.

\$(wiring_diagram)

\$(dimensional_drawing)

SPECIFICATION SUBMITTAL

<p>JOB NAME:</p> <input style="width: 90%; height: 20px;" type="text"/>	<p>CATALOG NUMBERS:</p> <table border="1" style="width: 100%;"> <tr> <td style="width: 50%; height: 20px;"><input type="text"/></td> <td style="width: 50%; height: 20px;"><input type="text"/></td> </tr> <tr> <td style="width: 50%; height: 20px;"><input type="text"/></td> <td style="width: 50%; height: 20px;"><input type="text"/></td> </tr> </table>	<input type="text"/>	<input type="text"/>	<input type="text"/>	<input type="text"/>
<input type="text"/>	<input type="text"/>				
<input type="text"/>	<input type="text"/>				
<p>JOB NUMBER:</p> <input style="width: 90%; height: 20px;" type="text"/>					

Leviton Manufacturing Co., Inc

201 North Service Road, Melville, NY 11747

Telephone: +1-800-323-8920 · FAX: +1-800-832-9538 · Tech Line (8:30AM-7:30PM E.S.

T. Monday-Friday): +1-800-824-3005

Leviton Manufacturing of Canada, Ltd.

165 Hymus Boulevard, Pointe Claire, Quebec H9R 1E9 · Telephone: +1-800-461-2002 ·

FAX: +1-800-824-3005 ·

Leviton S. de R.L. de C.V.

Lago Tana 43, Mexico DF, Mexico CP 11290 · Tel.: (+52)55-5082-1040 · FAX: (+52) 5386- 1797 ·

Visit our Website at: www.leviton.com

© 2026 Leviton Manufacturing Co., Inc. All Rights Reserved. Subject to change without notice.

Leviton has a global presence.

If you would like to know where your local Leviton office is located please go to:
www.leviton.com/company/about-leviton/locations

© 2026 Leviton Manufacturing Co., Inc.