

C72003MBAG

INSTALLATION INSTRUCTIONS SHEET

START FROM HERE

- Make sure power is completely off at the fuse box.
- Have your fixture installed by a qualified licensed electrician
- Prepare everything in clear area.
- Wear gloves at all times during this installation.
- Read instructions carefully before you start assembly.
- Keep this instruction sheet for future reference.

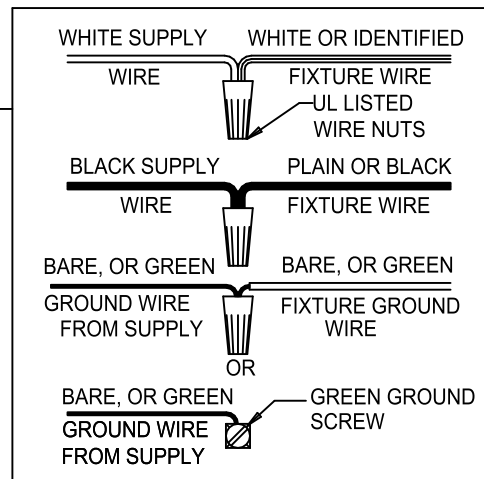
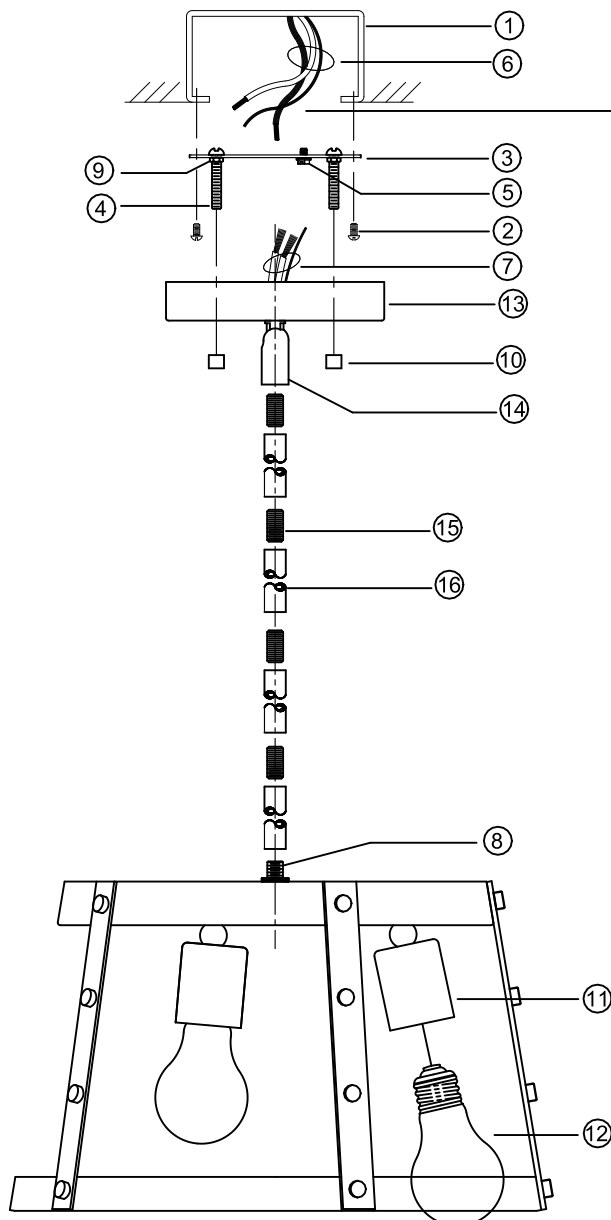
Technical Support: 1-844-628-8368

Please Note:

- All Matteo Lighting fixtures come with pre-wired module(s).
- Unless instructed to do so, please do not touch any part of the module(s) as any unnecessary contact with the module could cause permanent damage.

THIS LUMINAIRE MUST BE MOUNTED OR SUPPORTED INDEPENDENT OF AN OUTLET BOX

CE LUMINAIRE NE DOIT PAS ETRE MONTE SUR UNE BOITE DE SORTIE NI SUPPORTE PAR UNE TELLE BOITE



- 1 Ensure main supply is switched off.
- 2 Lock the ground screw (5) and mounting screws (4) to the round mounting strap (3). Have the mounting screws (2) through the round mounting strap (3), and screws into J-box (1) (not included).
- 3 Put the wires through the rods (15)(16) and the swivel (14). Install rod (16) onto nipple (8), fasten the rods (16) with nipple (15) (install as many rods needed).
- 4 Connect the wires (6)(7) using wire nuts. Screw mounting screws (4) through canopy (13) and fasten using nuts (10).
- 5 Install the bulb (12) (not included) into socket (11).