

# NTE-855

## Jason Round LED Track Head

Source: 18W to 38W LED  
1400lm to 2800lm

Type

Project

Catalog No.

Notes

### PRODUCT DESCRIPTION

Small scale, LED Cylinder Track Fixture delivering up to 2800 lumens. Constructed of extruded and machined aluminum, the heat-sink and integrated driver housing provide a sleek and modern look, designed to quietly compliment any space. Dimming is standard and allows smooth illumination down to 10% precision adjustment. 315° aiming horizontal rotation, 90° vertical rotation. Integral on/off switch and track polarity indicator are standard.

### FEATURES

- 1400lm, 2200lm or 2800lm LED packages
- 3000K, 3500K or 4000K @ 80 or 90 CRI
- Available in spot, narrow flood or flood beam spread
- Integral dimmable driver
- Die-cast aluminum construction with deep set COB optics
- Lens holder accommodates one accessory
- Clear glass lens included
- DLC Listed

### CONSTRUCTION

**Housing:** Die-cast aluminum construction dissipates heat for longer life.

**Optics:** Molded TIR Optic engineered to provide a smooth uniform beam, maximizing output and minimizing glare. Available in spot, medium or flood beam spreads.

**Adjustability:** 315° horizontal and 90° vertical adjustment

### ELECTRICAL

**Input Voltage:** 120V

**Lumens / Wattage:** 18 = 1400lm / 18W; 26 = 2200lm / 26W; 33 = 2800lm / 38W

**Binning:** 2-Step MacAdam (2 SDCM)

**Color Temperature:** 3000K, 3500K or 4000K

**CRI:** 80 or 90

**Beam Spread:** 24° Spot, 40° narrow flood or 60° flood

**Dimming:** Triac or ELV

[Click Here](#) or check complete dimmer list at [www.NoraLighting.com](http://www.NoraLighting.com) in the "Compatibility" page under "Resources" tab

**One / Two Circuit Conversion:** Positive contact (opposite neutral and ground contacts) is preset to "down" position at factory, but may be raised to the higher position to install onto the second circuit of Nora Lighting NT-2300 series two-circuit track.

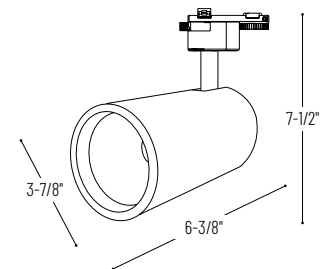
**Accessories:** Luminaire will accommodate (1) glass or louver and (1) barn door or snoot, no accessory holder is required.

### LABELS AND LISTINGS

- cULus Listed for dry locations
- DLC Listed
- [5-Year Limited Warranty](#)



### PRODUCT IMAGES & DIMENSIONS



### Jason Round LED Track Head

Series	Lumens / Wattage	Beam Spread	Color Temperature / CRI	Finish
<b>NTE-855</b>	<b>18</b> = 1400lm / 18W	<b>S</b> = 24° Spot	<b>30</b> = 3000K / 80 CRI	<b>B</b> = Black
	<b>26</b> = 2200lm / 26W	<b>M</b> = 40° Narrow Flood	<b>35</b> = 3500K / 80 CRI	<b>S</b> = Silver (special order only)
	<b>33</b> = 2800lm / 38W	<b>F</b> = 60° Flood	<b>40</b> = 4000K / 80 CRI	<b>W</b> = White
			<b>930</b> = 3000K / 90 CRI	
			<b>935</b> = 3500K / 90 CRI	
			<b>940</b> = 4000K / 90 CRI	

### Optional Accessories

Description
<b>NTE-855BDB</b> = Barndoor, Black
<b>NTE-855BDW</b> = Barndoor, White
<b>NTE-855SN</b> = Snoot, Black
<b>NTE-855NWW</b> = Directional Shield, Black
<b>NTE-855HC</b> = Honeycomb Louver
<b>NTE-855CG</b> = Clear Glass
<b>NTE-855FG</b> = Frosted Glass
<b>NTE-855REFL24</b> = 24° Spot Optic
<b>NTE-855REFL40</b> = 40° Narrow Flood Optic
<b>NTE-855REFL60</b> = 60° Flood Optic

Example: **NTE-85526M930W** = Jason Round LED Track Head, 2200lm / 26W, 40° Narrow Flood, 3000K / 90 CRI, White Finish

# NTE-855

## Jason Round LED Track Head Accessories

Type \_\_\_\_\_  
Project \_\_\_\_\_  
Catalog No. \_\_\_\_\_  
Notes \_\_\_\_\_



Honeycomb Louver

**NTE-855HC**

Adds a honeycomb louver accessory to Jason track head.



Frosted Glass

**NTE-855FG**

Replaces the clear glass included with Jason track head.



Barndoor

**NTE-855BDB**  
**NTE-855BDW**

Adds an adjustable barn door accessory to Jason track head.

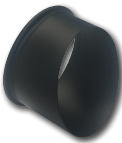
Black  
White



Black Snoot

**NTE-855SN**

Adds a black snoot which reduces glare and spill light.



Black Directional Shield

**NTE-855SNWW**

Directional shield provides 45° cutoff.



Field Replaceable Optics

**NTE-855REFL24**

24° Spot

**NTE-855REFL40**

40° Narrow Flood

**NTE-855REFL60**

60° Flood

Luminaire's optics can be changed in the field

# PHOTOMETRICS

## Jason Round LED Track Head

Type

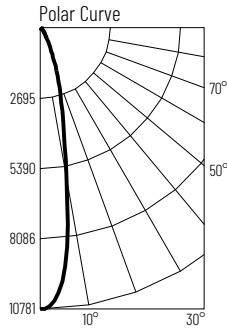
Project

Catalog No.

Notes

### Test Information

Test Number: NTT11009  
 Part Number: NTE-85533S30  
 Beam Spread: Spot  
 Lumens: 2941lm  
 Wattage: 35.6W  
 Efficacy: 83lpw  
 CCT / CRI: 3000K / 80 CRI  
 Spacing Criteria (0°-180°): 0.44  
 Spacing Criteria (90°-270°): 0.42



### Illuminance at a Distance

Distance from Luminaire	FC at Nadir	Beam Diameter
4'	669fc	1'-10"
6'	297fc	2'-8"
8'	167fc	3'-6"
10'	107fc	4'-5"
12'	74.4fc	5'-4"

### Zonal Lumen Summary

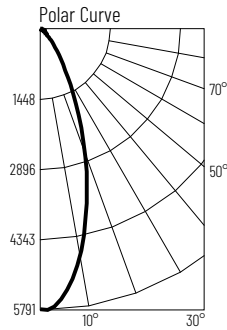
Zone	Lumens	% Luminaire
0-30	2533	86.1
0-40	2830	96.2
0-60	2895	98.4
0-90	2901	98.7
90-180	40	1.3
0-180	2941	100

### Candela Table

Vertical Angles	Candela
0	10709
5	9673
15	3833
25	1340
35	445
45	59

### Test Information

Test Number: NTT11011  
 Part Number: NTE-85533M30  
 Beam Spread: Narrow Flood  
 Lumens: 2819lm  
 Wattage: 35.5W  
 Efficacy: 80lpw  
 CCT / CRI: 3000K / 80 CRI  
 Spacing Criteria (0°-180°): 0.66  
 Spacing Criteria (90°-270°): 0.64



### Illuminance at a Distance

Distance from Luminaire	FC at Nadir	Beam Diameter
4'	361fc	2'-10"
6'	160fc	4'-4"
8'	90.2fc	5'-8"
10'	57.7fc	7'-1"
12'	40.1fc	8'-6"

### Zonal Lumen Summary

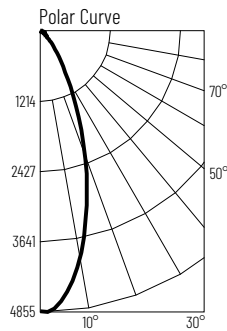
Zone	Lumens	% Luminaire
0-30	2408	85.4
0-40	2714	96.3
0-60	2775	98.4
0-90	2783	98.7
90-180	36	1.3
0-180	2819	100

### Candela Table

Vertical Angles	Candela
0	5774
5	5643
15	4101
25	1646
35	456
45	54

### Test Information

Test Number: NTT11008  
 Part Number: NTE-85533F30  
 Beam Spread: Flood  
 Lumens: 2927lm  
 Wattage: 36.5W  
 Efficacy: 80lpw  
 CCT / CRI: 3000K / 80 CRI  
 Spacing Criteria (0°-180°): 0.78  
 Spacing Criteria (90°-270°): 0.78



### Illuminance at a Distance

Distance from Luminaire	FC at Nadir	Beam Diameter
4'	299fc	3'-10"
6'	133fc	5'-7"
8'	74.8fc	7'-6"
10'	47.9fc	9'-5"
12'	33.2fc	11'-4"

### Zonal Lumen Summary

Zone	Lumens	% Luminaire
0-30	2518	86
0-40	2875	98.2
0-60	2908	99.3
0-90	2912	99.5
90-180	15	0.5
0-180	2927	100

### Candela Table

Vertical Angles	Candela
0	4785
5	4721
15	3782
25	2442
35	291
45	23