

HVAC ACCESSORIES

FAP-36x30



HIGHLIGHTS

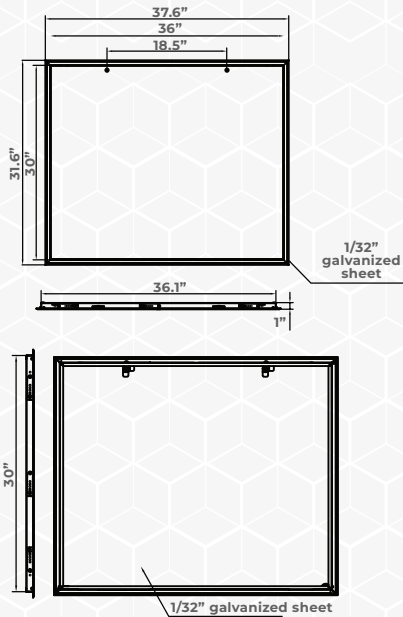
36"x30" Flush Access Panel with welded frame and strong durable bended door lid

- White powder coated finish or coating in special colours provides high durability and corrosion protection.
- Good value for all plumbing, electrical, mechanical applications.
- 1/32" galvanized steel.
- Steel bar hinge door removable.
- Swing tab for installation fixing screw.
- Screwdriver operated cam latch.
- Welded four frames.
- Easy installation.

SPECIFICATIONS

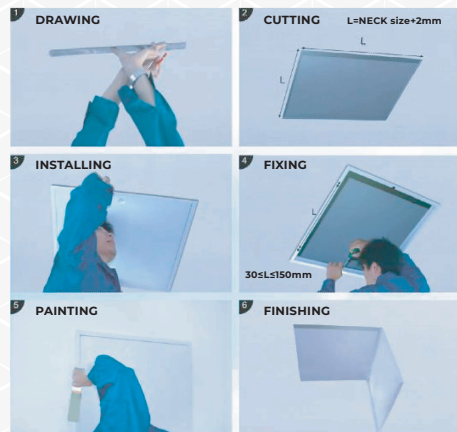
FAP-36"x30"	
Construction	RAL9016 white powder coated
Frame	Welded
Cam Latch	Screwdriver operated
Applications	Plumbing, electrical, mechanical
Opening Size	36"x30"
Overall Size	37.6"x31.6"
Material	Galvanized iron
Thickness	0.9mm

DIMENSIONS



**CONTROL THE AIR,
MASTER THE COMFORT**

INSTALLATION



REFERENCE	QUANTITY	REMARKS	PROJECT DETAILS
			Project:
			Location:
			Architect:
			Engineer:
			Contractor:
			Submitted By:
			Date:

ORTECH reserves the right to modify at any time, without notice, any or all of our product's features, designs, components and specifications to meet market changes.