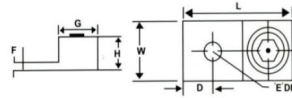


ALUMINIUM SINGLE BARREL CONNECTORS – ONE HOLE MOUNT

- Made of high strength aluminium - 6061-T6
- Used for copper and or aluminium conductors.
- Electro - Tin plated for low contact resistance and protection against corrosion.
- East installation, no tools required.
- Connectors are re-usable.
- cULus 486B listed
- Rated 600 volts / 90°C

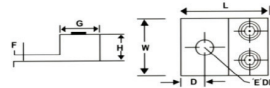


| PART NO | CONDUCTOR RANGE | | DIMENSION IN INCHES | | | | |
|---------------|-----------------|------------|---------------------|------|------|------|-----------|
| | MIN | MAX | L | W | D | E | BOLT HOLE |
| LA6 | 14 AWG | 4 STR | 1.10 | 0.50 | 0.23 | 0.09 | 1/4 |
| LA2 | 14 AWG | 2 STR | 1.16 | 0.50 | 0.30 | 0.11 | 1/4 |
| LA1/0 | 14 AWG | 1/0 STR | 1.46 | 0.63 | 0.44 | 0.19 | 1/4 |
| LA2/0 | 14 AWG | 2/0 STR | 1.46 | 0.63 | 0.44 | 0.19 | 1/4 |
| LA250 | 6 STR | 250 KCMIL | 2.00 | 0.86 | 0.50 | 0.25 | 5/16 |
| LA350 | 6 STR | 350 KCMIL | 2.25 | 1.25 | 0.50 | 0.25 | 3/8 |
| LA500 | 4 STR | 500 KCMIL | 2.81 | 1.50 | 0.75 | 0.32 | 3/8 |
| LA600 | 2 STR | 600 KCMIL | 3.19 | 1.50 | 0.81 | 0.44 | 3/8 |
| LA800 | 300 KCMIL | 800 KCMIL | 3.37 | 1.75 | 0.87 | 0.50 | 5/8 |
| LA1000 | 500 KCMIL | 1000 KCMIL | 3.37 | 1.75 | 0.87 | 0.50 | 5/8 |

F

ALUMINIUM TWO BARREL CONNECTORS – ONE HOLE MOUNT

- Made of high strength aluminium - 6061-T6
- Used for copper and or aluminium conductors.
- Electro - Tin plated for low contact resistance and protection against corrosion.
- East installation, no tools required.
- Connectors are re-usable.
- cULus 486B listed
- Rated 600 volts / 90°C



| PART NO | CONDUCTOR RANGE | | DIMENSION IN INCHES | | | | |
|-----------------|-----------------|------------|---------------------|------|------|------|-----------|
| | MIN | MAX | L | W | D | E | BOLT HOLE |
| L2A0 | 14 AWG | 1/0 STR | 1.46 | 1.22 | 0.44 | 0.19 | 1/4 |
| L2A2/0 | 14 AWG | 2/0 STR | 1.46 | 1.25 | 0.42 | 0.19 | 1/4 |
| L2A250 | 6 STR | 250 KCMIL | 2.56 | 1.64 | 0.88 | 0.25 | 3/8 |
| L2A350 | 6 STR | 350 KCMIL | 2.87 | 1.91 | 0.88 | 0.25 | 1/2 |
| L2A600 | 2 STR | 600 KCMIL | 3.19 | 2.40 | 0.63 | 0.44 | 1/2 |
| L2A800* | 300 KCMIL | 800 KCMIL | 3.37 | 3.19 | 0.88 | 0.50 | 5/8 |
| L2A1000* | 500 KCMIL | 1000 KCMIL | 3.37 | 3.19 | 0.88 | 0.50 | 5/8 |

* Not UL Listed